



<http://yachtworld.com/reefys>

7 Barracuda Lane
Key Largo, FL 33037 USA

Tel 305-367-9422
Fax 305-367-9424
Email reachcaptaingreg@bellsouth.net



OWL'S NEST

72' Merritt Sport Fisherman

- Year: 2003
- **Current Price:**
US\$ 3,800,000 (12/09)
- Located in Miami Beach, FL
- Hull Material: Fiberglass
- Engine/Fuel Type: Twin Diesel
- YW# 76207-2062818

This is a rare opportunity to own one of the nicest sport fishing boats ever constructed. Maintained by a fulltime crew of 4, the Owl's Nest represents the finest craftsmanship in the industry as well as the range and fishability to go anywhere. The boat has been Merritt boatyard maintained and the Caterpillar engines are still under warranty.

Additional Specs, Equipment and Information:

Builder/Designer

Builder: Merritt

Designer: Roy Merritt

Dimensions

LOA: 72'

Beam: 19'9"

Draft: 5'6"

Engines

Engine(s): Caterpillar
Hours: 2450

Engine(s) HP: 1650
Cruising Speed: 26

Engine Model: C-30
Max Speed: 30

Tankage

Fuel: 2300

Water: 400

Salon/Companionway

- U shaped couch with storage
- Sahara granite counters with inlaid A/C returns
- Teak molding's and valance's
- Fabrica nylon carpet
- 42 inch Sharp flat screen TV
- Lighted stairway
- Teak armrest with storage
- Custom bar stools with teak bases
- Overhead halogen lighting
- Sound absorbing carpet padding
- Teak coffee table
- A/C control
- Electrical panel

Galley

- Sahara Granite counter tops
- (4)burner Gaggenau stove
- Custom teak sole
- Whirlpool ice machine with teak cover
- Ample storage, (19)galley draws and (5) pantry, all teak satin finished faces with custom latches
- Full spice rack
- Stainless sink and wash basin
- Sub-Zero re Fridgeration and freezer
- Micro/Convection oven
- Custom storage for cooking utensils
- Garbage disposal

Master Stateroom/Head

- Full size queen with custom mattress
- Switch controlled hydrolic ram that lifts and lowers the bed for storage
- 37" Sharp flat screen TV with Sony DVD player
- Starlight granite countertops
- Built in nightstands with storage
- Exceptional woodwork with a 5 semi-column design
- 12 draw teak garmit chest with mirrored panels
- Walk in cedar lined closet with built-in shoe racks and 5 draw storage
- Overhead headboard storage
- Head has Starlight dark granite countertops with ridged sink
- Headhunter freshwater toilets
- Full stand up shower with seating
- Burl walnut sole with cover

VIP Stateroom/Head

- (1) double bed, custom foam mattress and storage underneath
- Sharp Flatscreen TV with Sony DVD player
- Cedar lined hang up closet
- Independant A/C control
- Sahara granite countertop
- Head hunter fresh water toilet
- Full stand up shower
- Burl walnut sole with cover

Stateroom 3 & 4

- STBD stateroom is an over and under bunk style
- Cedar lined hang-up closet with 3 draws
- Teak bunk rails and face
- Day head access
- Port stateroom is an oversized single bunk
- 75 Cubic ft of storage under bunk
- Teak bunk rails, face and cabinetry

Day Head/ Laundry

- Day head has companionway and stateroom access
- Granite sahara countertops
- Full standup shower
- Burl walnut sole with cover
- Laundry consists of Whirlpool Thin Twin, over/under, washer and dryer
- Separate dirty laundry compartment

Tower

- 11 step Merritt tower
- Caterpillar displays
- Fully blacked out dash
- Stainless Kablenberg air horns
- Hose and hose bib
- Simrad AP-21 Remote
- Furuno RD-30 bottom finder
- Bow thruster control
- Standard Horizon VHF
- Northstar 6100i
- Syrens onboard WiFi marine wireless control box
- Separate stereo speakers and volume control

Bridge/Electronics

- Teak console deck with storage
- 3 teak Merritt helm chairs with foot rests
- Forward and side seating with cushions and custom rod storage underneath
- Overhead recessed lighting
- Refrigerated drink box
- Stainless sink with wet bar area
- Brow area storage
- EZ2CY full 3 sided enclosure
- Aft bridge rail with 7 rod holders
- (3) VEI monitors
- Northstar 6100i GPS
- Caterpillar displays
- (2) Furuno RD-30 depth displays
- Furuno FCV 1200 commercial bottom machine with transducers
- Glendenning electronic controls
- Compu-tank tank monitors
- (2)Standard Horizon VHF radios
- Simrad AP-20 autopilot
- (2)Furuno commercial radar's with separate antennas
- Bow thruster control
- Richie compass with teak bezel

Cockpit

- Teak cockpit and covering boards
- Merritt teak fighting chair
- (6)covering board and 6 tower leg rod holders
- 8 draw tackle storage
- (2)75 gal. live wells with pump outs and

- Separate port and stbd bait freezers
- Two refrigerated drink boxes
- Lazarette access
- 41' Rupp outriggers with center rigger
- Eskimo ice maker
- Mya-Epoich teaser reels
- Insulated fish box with macerator
- Walk thru transom door
- Transom zinc
- Fresh water washdown outlet
- circulating pumps
- Polished stainless bridge ladder with teak steps
- Cockpit wing curtains
- 12 volt electric reel plugs
- Cockpit cover

Engine Room/Pump room

- Caterpillar C-30 Main engines under warranty
- Engine displays with starts and stops
- (2)30 KW Kilo-Pak generators
- (2)Charles 60 AMP chargers
- (2)50 AMP power cords
- (6)racor fuel filters
- Halon fire system
- Oil change system
- Air Compressor
- Dripless shaft and rudder logs
- Quantum hydrolic bow-thruster
- (4) Thermostat controlled engine room blowers
- (3)independant fresh water pumps
- 30 gal stainless hot water heater
- Blackwater tank with indicator
- (2) 1200 GPD Watermaker Inc. watermakers
- Marine Air chilled water A/C system
- Refridgeration pumps and compressors
- Back-up raw water A/C pump
- Work bench with vise

Additional Equipment

- (2) Givens, 8 man raft's certified
- KVH Marine satellite
- Underwater lights
- Cockpit controls
- Built-in achor well with windlass, fresh warter and compressed air
- Fore-deck complete cushion



STBD, AFT



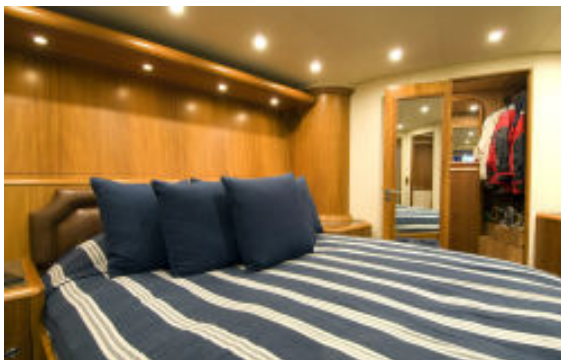
Salon fwd



Salon aft



Galley



Master



Master Head



VIP Stateroom



VIP Head



Double crew bunks



Day head



Helm



FWD Bridge seating



Transom



Tower



Cockpit